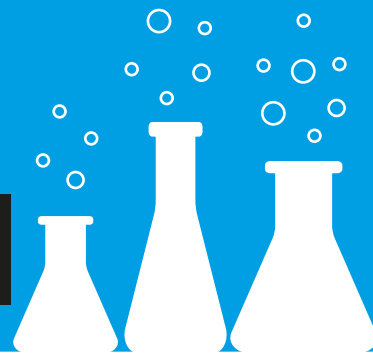


LODZ

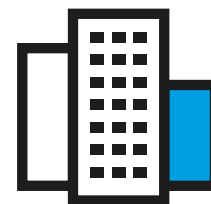
CITY OF RESEARCH



**CLOSE COOPERATION
OF SCIENTISTS IN LODZ**

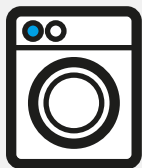


WITH BUSINESS



**CREATES INTERNATIONAL
COMPANIES' R&D CENTERS**

Research & Development in Lodz



**Bosch&Siemens
Indesit**



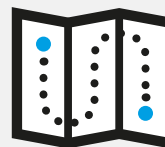
Fujitsu



**Samsung R&D
Research and Development
Center**



Citi Handlowy



TomTom



**Corning Cable
Systems Polska**

CITY OF INNOVATION



EMPLOYERS IN R&D SECTOR

B/S/H
Citi Handlowy
Corning Cable Systems Polska
Fujitsu
Indesit
Samsung R&D
TomTom

WHO WE NEED:

DESIGN ENGINEER
JUNIOR AUTOMATION ENGINEER IN R&D DIVISION
C/C++ PROGRAMMER IN R&D DIVISION
JAVA ANDROID (MOBILE DEVICES) PROGRAMMER
R&D ENGINEER
BUILT-IN SOFTWARE TESTER



During the last 5 years I've been working in Fujitsu on different projects. Each of those projects was run by a committed team in a professional manner and in a great atmosphere. R&D branch gives big opportunities for development. I am happy that my company takes advantage of that and gives many chances to take on new challenges. The fact that I work in my hometown – Lodz, continually gaining experience and working in a company with international range, gives me even more satisfaction.

Katarzyna Orzechowska, Team Manager, **Fujitsu**